

NT 600 TPI/FPI

⚡ 1500 VDC
 ⚡ 1050 VAC
 ⚡ 2 ADC

Image: NT 600 TPI/FPI with additional test point unit



NT 600 with application specific test point interfaces (TPI) or function point interfaces (FPI)

- ▶ Easy operation via PC with control software NT Control
- ▶ Extensive result reporting to file, to printer or via database connection*
- ▶ Extensive display possibilities and tools for the fault location in the unit under test
- ▶ Up to 1024 test points in the base unit, expandable via additional units up to max. 5120 test points, depending on the used TPIs or FPIs
- ▶ Continuity test, short-circuit test and component test
Optional:
 - ▶ High current test up to 2 ADC
 - ▶ High voltage test 1500 VDC
 - ▶ Dielectric strength test up to 1050 VAC
- ▶ Windows® Embedded CE
- ▶ Remote maintenance

* optional

Modular, powerful, easy to expand

The NT 600 TPI/FPI is the ideal entry-level tester – easy expandable for future test requirements.

- ▶ Low start-up costs
- ▶ Easy expandable:
 - ▶ Additional measurement generators (DC / AC)
 - ▶ LCR measurement bridge
 - ▶ Test point expansion via additional units
 - ▶ Four-wire measurement from 100 $\mu\Omega$
 - ▶ Insulation tests up to 10 G Ω m*

Ensuring of your product quality by high system availability

The high reliability of the adaptronic test and adapter systems, our quick response service and more than 30 years of experience make a convincing contribution to the quality assurance of your products.

NT 600 TPI/FPI Options

Measurement electronics expansions

to the base equipment MT20 up to 25 VDC / max. 25 mA

- ▶ Measurement generators:
 - ▶ MT40-40/MT250-40 up to 40 VDC / max. 100 mA
 - ▶ MT40-250/MT250-250 up to 250 VDC / max. 10 mA
 - ▶ MT1500DC up to 1500 VDC / max. 2 A
 High voltage insulation test / high current continuity test (optional up to 40 VDC / 10 A pulsed)
 - ▶ MT1000AC up to 1050 VAC / max. 3 mA (optional max. 5 mA)

Dielectric strength test AC

- ▶ Internal AC measurement bridge MT_LCR for the test of inductances, capacitances and resistances
- ▶ Voltage measurement device MT_EXT for the voltage measurement up to 700 VDC and 500 VAC (max. 400 Hz)
- ▶ Four-wire (Kelvin) measurement for measuring low resistances from 1 mOhm or 100 µOhm

Function test

- ▶ Stimulus cards
- ▶ Stimulus sources (with fixed voltages and programmable)
- ▶ Test and programming of one-wire devices
- ▶ Total integration of camera systems for visual tests
- ▶ ProfiNet, LIN-, CAN-, Mod-Bus TCP, other bus systems on request

Elaborate number of interfaces

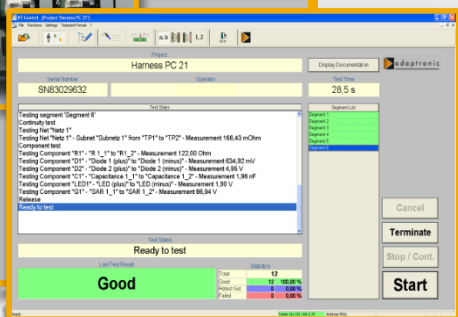
- ▶ Digital inputs and outputs 24 V
 - ▶ Interface for expansion units (standard)
 - ▶ Extern Interface (standard)
 - ▶ Safety loop (standard)
- etc.

NT Control test and programming software

- ▶ Graphic user interface with clear test display
 - ▶ Operating buttons, test status, statistics
 - ▶ In the error case display as error list or single error
- ▶ Editors for net lists, link lists, insulation point lists (prim lists) and component lists, function test editor
- ▶ Easy realization of special test procedures
- ▶ Comfortable multimeter function

NT Control is part of the delivery!

For further information about the wide-range of features please note the NT Control product information.



Open Wire Probe

- ▶ Intelligent pin number probe for continuity test
- ▶ Test point display
- ▶ Status display
- ▶ Operation modes automatic and manual

Operating and display options

- ▶ Foot switch for test start
- ▶ Warning lamp for high voltage tests
- ▶ Test result lamp

Temperature and humidity logging

- ▶ Combined temperature and humidity sensor
- ▶ Interface at the NT 600 TPI/FPI
- ▶ Temperature and humidity available in NT Control
- ▶ Reporting

Application specific test point interfaces and function point interfaces

- ▶ Usage of application specific test point interfaces TPIs or function point interfaces FPIs directly in the housing
- ▶ Application specific adapter cables for the connection to TPI or FPI
- ▶ Variant for intelligent adapter cables (IAC) available

Additional test point units

- ▶ Up to 1024 test points each unit (depending on TPI/FPI)
- ▶ Max. 4 additional units with max. 4096 test points can be operated from a NT 600 TPI/FPI (with max. 1024 test points)
- ▶ Positioning of the base unit and the additional units directly side by side or one upon the other

Additional services

- ▶ Training for programming and testing with NT Control and NT 600 TPI/FPI
- ▶ Calibration service
- ▶ Application specific assistance
- ▶ Programming of application specific test programmes

