

Komax Tooling

Komax Table of Contents

Komax Benchtop Stripping Machines

Cosmic 30M	Komax - 2
Cosmic 32M, Delta 50	Komax - 3
Cosmic 48R	Komax - 4
Cosmic 60R, Delta 60	Komax - 4
Cosmic 927R	Komax - 4
Komax 21	Komax - 5
Komax 205	Komax - 5
Komax 206	Komax - 6
Komax 206S	Komax - 6
Komax 30/31	Komax - 7
Komax 33	Komax - 9
Komax 34, Kappa 210, Kappa 220, Kappa 225, Kappa 320	Komax - 10
CR-701 Rotary Stripping Attachment	Komax - 11
Komax 35	Komax - 12
Komax 36	Komax - 13
Kappa 230, Kappa 235, Kappa 321, Kappa 330	Komax - 14
Kappa 240	Komax - 16
Kappa 310	Komax - 17
Kappa 350	Komax - 18

Komax Fully Automatic Cut, Strip and Terminating Machines

Komax 40, 41, 42 and 43 Series Machines	
KD Series Stripping Blades	Komax - 20
KV Series Stripping Blades	Komax - 26
Komax 4X Spacers	Komax - 28
Komax Alpha and Gamma Series Machines	
Gamma 255, Gamma 252-S	Komax - 29
Gamma 311, Gamma 333	Komax - 30
Alpha 411, Alpha 421, Alpha 422, Alpha 432	Komax - 30
Alpha 355, Alpha 356, Alpha 358, Alpha 433, Alpha 455, Alpha 477, Alpha 488	Komax - 32
Zeta 633, Zeta 651	Komax - 32
Special Tooling for Komax Machines	Komax - 34

Rev. 8/1/10



WIRELEASE • 30 Rue du Bois Moussay • 93240 STAINS
Tel : 0033 (0)1 49 51 51 45 • Fax : 0033 (0)1 49 51 51 50 • www.wirelease.fr

Komax Tooling

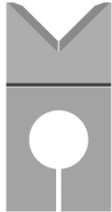
Komax Cosmic 30M Stripping Blades

Used In These Machines

Komax
Cosmic 30M

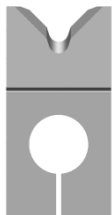
The Komax Cosmic 30M Machine is supplied with a set of (4) "Universal" Stripping Blades to remove the insulation from the end of a wire. Mechtrix replacement blades for the Komax Cosmic 30M Machines utilize our own (2) piece design to reduce cost and improve performance.

In addition to our own "Universal" Stripping Blades, Mechtrix also offers both our patented M-Series and Full Radius stripping form geometries for processing difficult insulations in the Komax Cosmic 30M Machine. Please contact Mechtrix for assistance in selecting the appropriate style and size blade for your particular application.



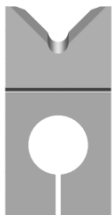
Cosmic 30M Universal Blades

Mechtrix Description	Mechtrix Part Number	Blade Form Diameter		OEM Part Number
		(in)	(mm)	
Cosmic 30M Universal Strip Blade (2 pc. Design)	28719	-	-	C32530 9-547951-0



Cosmic 30M M-Series Blades

Mechtrix Description	Mechtrix Part Number	Blade Form Diameter		OEM Part Number
		(in)	(mm)	
M-Series Blades are available in 0.1mm increments in the following sizes: C30MM-0.3 thru C30MM-5.0	-	-	-	-



Cosmic 30M Full Radius Blades

Mechtrix Description	Mechtrix Part Number	Blade Form Diameter		OEM Part Number
		(in)	(mm)	
Full Radius Blades are available in 0.1mm increments in the following sizes: C30-0.4D thru C30-5.0D	-	-	-	-

A set of Mechtrix Blades for the Komax Cosmic 30M consists of two (2) strip blades.



Komax Tooling

Cosmic 32M & Komax Delta 50 Stripping Blades

Used In These
Machines

Komax
Cosmic 32M
Delta 50

The Cosmic 32M and Komax Delta 50 Machines use a single set of "Universal" Stripping Blades to remove the insulation from the end of a wire. Mechtrix blades for the Cosmic 32M and Komax Delta 50 Machines are made to precision standards from a specially selected tool steel to insure optimum performance and blade life.

In addition to the "Universal" Stripping Blades, Mechtrix also offers both our patented M-Series and Full Radius stripping form geometries for processing difficult insulations in the Komax Cosmic 32M & Delta 50. Please contact Mechtrix for assistance in selecting the appropriate style and size blade for your particular application.



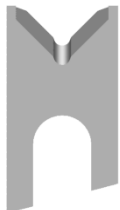
Cosmic 32M & Komax Delta 50 Universal Blades

Mechtrix Description	Mechtrix Part Number	Blade Form Diameter		OEM Part Number
		(in)	(mm)	
Komax K50-U Universal Strip Blade	23166	-	-	047894 C21211 3-547217-5



Cosmic 32M & Komax Delta 50 M-Series Blades

Mechtrix Description	Mechtrix Part Number	Blade Form Diameter		OEM Part Number
		(in)	(mm)	
M-Series Blades are available in 0.1mm increments in the following sizes: K50M-0.3 thru K50M-5.0	-	-	-	-



Cosmic 32M & Komax Delta 50 Full Radius Blades

Mechtrix Description	Mechtrix Part Number	Blade Form Diameter		OEM Part Number
		(in)	(mm)	
Full Radius Blades are available in 0.1mm increments in the following sizes: K50-0.4D thru K50-5.0D	-	-	-	-

A set of blades for the Cosmic 32M & Komax Delta 50 consists of two (2) pieces.

Mechtrix "Komax" Stripping Blades are protected by U.S. Patent 4,630,406 and U.S. Patent 4,577,405



WIRELEASE • 30 Rue du Bois Moussay • 93240 STAINS
Tel : 0033 (0)1 49 51 51 45 • Fax : 0033 (0)1 49 51 51 50 • www.wirelease.fr

Komax Tooling

Komax Cosmic 48R Stripping Blades

Used In These Machines

Komax
Cosmic 48R



The Komax Cosmic 48R Machine use a single set of "Universal" Stripping Blades to remove the insulation from the end of a wire. Mechtrix blades for these Komax Machines are made to precision standards from a specialty micro-grain carbide to insure optimum performance and blade life. State-of-the-art manufacturing techniques are combined with Mechtrix grinding technology creates precision ground stripping form edges which in turn produce the highest quality cutting tool possible.

Cosmic 48R Universal Blades

Mechtrix Description	Mechtrix Part Number	Blade Form Diameter		OEM Part Number
		(in)	(mm)	
Cosmic 48R Universal Strip Blade	32317	-	-	C408301

A set of Mechtrix Blades for the Komax Cosmic 48R consists of two (2) strip blades.

Cosmic 60R & Komax Delta 60 Stripping Blades

Used In These Machines

Komax
Cosmic 60R
Delta 60



The Cosmic 60R and Komax Delta 60 Machines use a single set of "Universal" Stripping Blades to remove the insulation from the end of a wire. Mechtrix blades for the Cosmic 60R and Komax Delta 60 Machines are made to precision standards from a specially selected tool steel to insure optimum performance and blade life.

Cosmic 60R & Komax Delta 60 Universal Blades

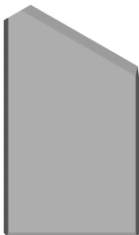
Mechtrix Description	Mechtrix Part Number	Blade Form Diameter		OEM Part Number
		(in)	(mm)	
Komax K60 Universal Strip Blade	23812	-	-	051589
				C60112
				3-547217-0

A set of blades for the Cosmic 60R & Komax Delta 60 consists of two (2) pieces.

Komax Cosmic 927R Stripping Blades

Used In These Machines

Komax
Cosmic 927R



The Komax Cosmic 927R Machine use a single set of "Universal" Stripping Blades to remove the insulation from the end of a wire. Mechtrix blades for these Komax Machines are made to precision standards from a specialty micro-grain carbide to insure optimum performance and blade life. State-of-the-art manufacturing techniques are combined with Mechtrix grinding technology creates precision ground stripping form edges which in turn produce the highest quality cutting tool possible.

Cosmic 927R Universal Blades

Mechtrix Description	Mechtrix Part Number	Blade Form Diameter		OEM Part Number
		(in)	(mm)	
Cosmic 927R Universal Strip Blade	28951-CT1	-	-	C65032 9-547951-2

A set of Mechtrix Blades for the Komax Cosmic 927R consists of two (2) strip blades.



WIRELEASE • 30 Rue du Bois Moussay • 93240 STAINS
Tel : 0033 (0)1 49 51 51 45 • Fax : 0033 (0)1 49 51 51 50 • www.wirelease.fr

Komax Tooling

Komax 21 Cut-off Blades

Used In These Machines

Komax 21

The Komax 21 Machines use a single set of cut-off blades to cut round or flat material to length. Mechtrix blades for the Komax 21 Machines are made to precision standards from a specially selected tool steels and micro-grain carbide to insure optimum performance and blade life. Please contact Mechtrix for assistance in selecting the appropriate style blade for your particular application.



Komax 21 Cut-off Blades

Mechtrix Description	Mechtrix Part Number	Blade Form Diameter		OEM Part Number
		(in)	(mm)	
KO21A Round Cut-Off Blade (Carbide)	17299	-	-	-
KO21A Round Cut-Off Blade (A2-Tool Steel)	15966	-	-	-
KO21B Flat Cut-Off Blade (A2-Tool Steel)	14847	-	-	-

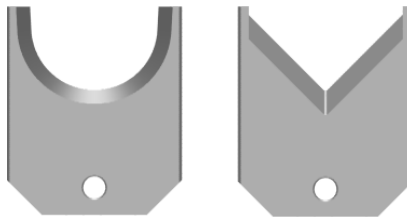
Komax 205 Cut-off Blades

Used In These Machines

Komax 205

The Komax 205 Machines use a single set of "Round" Cut-off Blades to cut material to length. Mechtrix blades for the Komax 205 Machines are made to precision standards from a specially selected tool steel to insure optimum performance and blade life. State-of-the-art manufacturing techniques are combined with Mechtrix patented technology to create superior cutting edge strength and durability.

In addition to the "Round" Cut-off Blades, Mechtrix also offers two "V-style" Cut-off Blades for processing difficult insulations and materials in the Komax 205 Machines. Please contact Mechtrix for assistance in selecting the appropriate style and size blade for your particular application.



Komax 205 Cut-off Blades

Mechtrix Description	Mechtrix Part Number	Blade Form Diameter		OEM Part Number
		(in)	(mm)	
KO205-45 Standard Round Cut-off Blade	24544	-	-	-
KO205UV-45 Universal V-Style Cut-off Blade	24542	-	-	-
KO205UV-30 Universal V-Style Cut-off Blade	24543	-	-	-

A set of blades for the Komax 205 consists of two (2) K205 Cut-off Blades.



WIRELEASE • 30 Rue du Bois Moussay • 93240 STAINS
Tel : 0033 (0)1 49 51 51 45 • Fax : 0033 (0)1 49 51 51 50 • www.wirelease.fr

Komax Tooling

Komax 206 Cut-off Blades

Used In These
Machines

Komax
206

The Komax 206 Machines uses a single set of Cut-off Blades to cut material to length. Mechtrix blades for the Komax 206 Machines are made to precision standards from a specially selected tool steel to insure optimum performance and blade life. State-of-the-art manufacturing techniques are combined with Mechtrix patented technology to create superior cutting edge strength and durability.



Komax 206 Cut-off Blades

Mechtrix Description	Mechtrix Part Number	Blade Form Diameter		OEM Part Number
		(in)	(mm)	
K206 Upper Cut-off Blade	26874	-	-	63351
K206 Lower Cut-off Blade	26875	-	-	

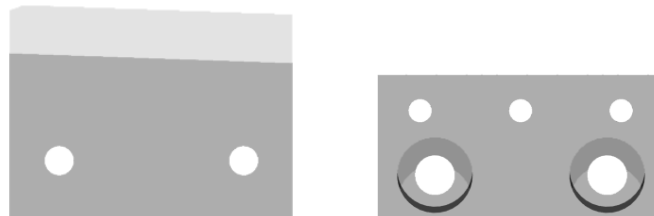
A set of blades for the Komax 206 consists of one (1) K206 Upper Cut-off Blade and one (1) K206 Lower Cut-off Blade.

Komax 206S Cut-off Blades

Used In These
Machines

Komax
206S

The Komax 206S Machines uses a single set of Cut-off Blades to cut material to length. Mechtrix blades for the Komax 206S Machines are made to precision standards from a specially selected tool steel to insure optimum performance and blade life. State-of-the-art manufacturing techniques are combined with Mechtrix patented technology to create superior cutting edge strength and durability.



Komax 206S Cut-off Blades

Mechtrix Description	Mechtrix Part Number	Blade Form Diameter		OEM Part Number
		(in)	(mm)	
K206S Upper Cut-off Blade	30375	-	-	-
K206S Lower Cut-off Blade	30376	-	-	
K206S Upper Cut-off Blade	30375-CT1	-	-	-
K206S Lower Cut-off Blade	30376-CT1	-	-	

A set of blades for the Komax 206S consists of one (1) K206S Upper Cut-off Blade and one (1) K206S Lower Cut-off Blade.

Mechtrix "Komax" Stripping Blades are protected by U.S. Patent 4,630,406 and U.S. Patent 4,577,405



WIRELEASE • 30 Rue du Bois Moussay • 93240 STAINS
Tel : 0033 (0)1 49 51 51 45 • Fax : 0033 (0)1 49 51 51 50 • www.wirelease.fr

Komax Tooling

Komax 30/31 Stripping Blades

Used In These
Machines

Komax
30/31

Mechtrix manufactures two distinct blade types use in the Komax 30/31 machines. Please note that the use of either style blade requires that the machine be equipped with the "new style" cutterhead which contains 3 ground pins on which the blade(s) are located.

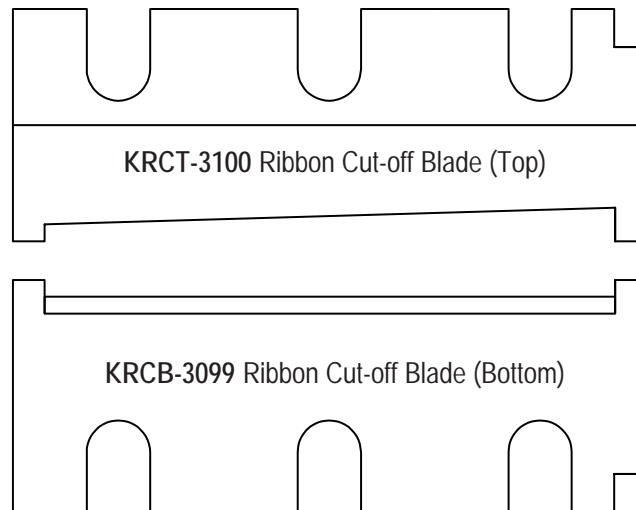


The first type of blade that can be used in the 30/31 machine is the standard "KD" Series blade detailed on page Komax - 19. The "KD" Series blades are used when single conductor cables are being processed.

Mechtrix blades for the Komax 30/31 Machines are made to precision standards from a specially selected tool steel and micro-grain carbide to insure optimum performance and blade life. State-of-the-art manufacturing techniques are combined with Mechtrix patented technology to create perfect stripping forms which produce the highest quality cutting tool possible.

The blades listed on the following page are for multiple conductor cables. The stripping blades are designed to butt together and are offered with a wide variety of cutting form radii and center-to-center distances. The cut-off blades bypass and feature "tang" on each side of both the top and bottom blade to increase the blades rigidity. Mechtrix also offers "Insulation Stabilizers" for use with the 30/31 ribbon blades that aid in maximizing the straight line relationship between the stripped end and the body of the wire when doing longer strip lengths, please consult Mechtrix for further information.

Mechtrix Cut-off Blades for the Komax 30/31 Machine



Komax Tooling

Used In These
Machines

Komax
30/31

Komax 30/31 Ribbon Cable Stripping Blades (for Ribbon Cables with Center-to-Center Pitch Dimensions in Inches)

Cable Conductor Diameter		Pitch: 0.050" (1.27mm)	Pitch: 0.100" (2.54mm)	Pitch: 0.156" (3.96mm)
(in)	(mm)	Number of Notches: 48	Number of Notches: 24	Number of Notches: 16
0.013	0.33	KRL-8996 (Long)	KRL-4559 (Long)	KRL-4569 (Long)
0.014	0.36	KRS-8997 (Short)	KRS-4560 (Short)	KRS-4570 (Short)
0.015	0.38	KRL-8998 (Long) KRS-8999 (Short)	KRL-4561 (Long) KRS-4562 (Short)	KRL-4571 (Long) KRS-4572 (Short)
0.016	0.41			
0.017	0.43			
0.018	0.46			
0.019	0.48			
0.020	0.51	-	KRL-4563 (Long) KRS-4564 (Short)	KRL-4573 (Long) KRS-4574 (Short)
0.021	0.53			
0.022	0.56			
0.023	0.58			
0.024	0.61			
0.025	0.63	-	KRL-4565 (Long) KRS-4566 (Short)	KRL-4575 (Long) KRS-4576 (Short)
0.026	0.66			
0.027	0.69			
0.028	0.71			
0.029	0.74			
0.030	0.76	-	KRL-4567 (Long) KRS-4568 (Short)	KRL-4577 (Long) KRS-4578 (Short)
		Cut-off Blades: KRCB-3099 Ribbon Cut-off Blade (Bottom) KRCT-3100 Ribbon Cut-off Blade (Top)		

Komax 30/31 Ribbon Cable Stripping Blades (for Ribbon Cables with Center-to-Center Pitch Dimensions in mm)

Cable Conductor Diameter		Pitch: 1.5mm (0.059")	Pitch: 2.0mm (0.079")	Pitch: 2.5mm (0.098")
(in)	(mm)	Number of Notches: 40	Number of Notches: 30	Number of Notches: 24
0.013	0.33	KRL-9016 (Long)	KRL-9007 (Long)	KRL-9014 (Long)
0.014	0.36	KRS-9017 (Short)	KRS-9008 (Short)	KRS-9015 (Short)
0.015	0.38	KRL-9002 (Long) KRS-9003 (Short)	KRL-7720 (Long) KRS-7721 (Short)	KRL-9018 (Long) KRS-9019 (Short)
0.016	0.41			
0.017	0.43			
0.018	0.46			
0.019	0.48			
0.020	0.51	-	KRL-8484 (Long) KRS-8485 (Short)	KRL-9020 (Long) KRS-9021 (Short)
0.021	0.53			
0.022	0.56			
0.023	0.58			
0.024	0.61			
0.025	0.63	-	KRL-9009 (Long) KRS-9010 (Short)	KRL-9022 (Long) KRS-9023 (Short)
0.026	0.66			
0.027	0.69			
0.028	0.71			
0.029	0.74			
0.030	0.76	-	KRL-9011 (Long) KRS-9012 (Short)	KRL-9024 (Long) KRS-9035 (Short)
		Cut-off Blades: KRCB-3099 Ribbon Cut-off Blade (Bottom) KRCT-3100 Ribbon Cut-off Blade (Top)		



WIRELEASE • 30 Rue du Bois Moussay • 93240 STAINS
Tel : 0033 (0)1 49 51 51 45 • Fax : 0033 (0)1 49 51 51 50 • www.wirelease.fr

Komax Tooling

Komax 33 Stripping Blades

Used In These
Machines

Komax
33

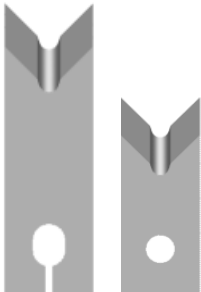
The Komax 33 Machines use a single set of "Universal" Stripping Blades to remove the insulation from the end of a wire. Mechtrix blades for the Komax 33 Machines are made to precision standards from a specially selected tool steel and micro-grain carbide to insure optimum performance and blade life. State-of-the-art manufacturing techniques are combined with Mechtrix patented technology to create perfect stripping form radii which produce the highest quality cutting tool possible.

In addition to the "Universal" Stripping Blades, Mechtrix also offers both our patented M-Series and Full Radius stripping form geometries for processing difficult insulations in the Komax 33 Machines. Please contact Mechtrix for assistance in selecting the appropriate style and size blade for your particular application.

Komax 33 Universal Blades

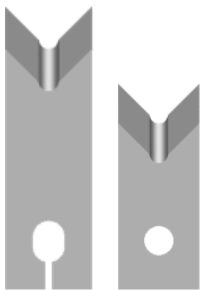


Mechtrix Description	Mechtrix Part Number	Blade Form Diameter		OEM Part Number
		(in)	(mm)	
KL33/35 (D2) Stripping Blade (S4)	01612-02	-	-	110106
KS33 (D2) Stripping Blade (S4)	01613-02	-	-	
KL33/35 Long (C15) Stripping Blade (S7)	01612-01	-	-	012627
KS33 (C15) Short Stripping Blade (S7)	01613-01	-	-	
KL33/35 Long (C17) Stripping Blade (Ultra Hard)	01612-03	-	-	-
KS33 (C17) Short Stripping Blade (Ultra Hard)	01613-03	-	-	



Komax 33 M-Series Blades

Mechtrix Description	Mechtrix Part Number	Blade Form Diameter		OEM Part Number
		(in)	(mm)	
M-Series Blades are available in 0.1mm increments in the following sizes: K33/35M-0.3 thru K33/35M-7.0 Long and Short	-	-	-	-



Komax 33 Full Radius Blades

Mechtrix Description	Mechtrix Part Number	Blade Form Diameter		OEM Part Number
		(in)	(mm)	
Full Radius Blades are available in 0.1mm increments in the following sizes: K33/35-0.4D thru K33/35-7.0D Long and Short	-	-	-	-

A set of blades for the Komax 33 consists of one (1) KS33/35 Strip Blade-Short and one (1) KL33/35 Strip Blade-Long.

Mechtrix "Komax" Stripping Blades are protected by U.S. Patent 4,630,406 and U.S. Patent 4,577,405



WIRELEASE • 30 Rue du Bois Moussay • 93240 STAINS
Tel : 0033 (0)1 49 51 51 45 • Fax : 0033 (0)1 49 51 51 50 • www.wirelease.fr

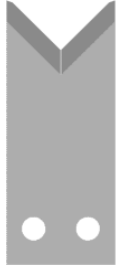
Komax Tooling

Komax 34 and Kappa 210, 220, 225 and 320 Stripping Blades

Used In These Machines

Komax
34
Kappa 210
Kappa 220
Kappa 225
Kappa 320

The Komax 34 and Komax Kappa 210, Kappa 220, Kappa 225 and Kappa 320 Machines use a single set of "Universal" Stripping Blades to remove the insulation from the end of a wire. Mechtrix blades for these Komax Machines are made to precision standards from a specially selected tool steel and micro-grain carbide to insure optimum performance and blade life. State-of-the-art manufacturing techniques are combined with Mechtrix patented technology to create perfect stripping form radii which produce the highest quality cutting tool possible.



Komax 34 and Kappa 210, 220, 225 and 320 Universal Blades

Mechtrix Description	Mechtrix Part Number	Blade Form Diameter		OEM Part Number
		(in)	(mm)	
K34 (C15) Stripping Blade (S73)	07710-01	-	-	016497
K34 (D2) Stripping Blade	07710-02	-	-	-
K34 (C17) Stripping Blade (Ultra Hard)	07710-04	-	-	-



Komax 34 and Kappa 210, 220, 225 and 320 Radius V-Blades

Mechtrix Description	Mechtrix Part Number	Blade Form Diameter		OEM Part Number
		(in)	(mm)	
K34V-R0.5 Strip Blade (D2)	30748	0.03937	1.00	040555
K34V-R0.5 Strip Blade (C17)	30749-01			040554
K34V-R1.0 Strip Blade (D2)	26791	0.07874	2.00	035220
K34V-R1.0 Strip Blade (C17)	30750-01			035219
K34V-R1.5 Strip Blade (D2)	26792	0.11811	3.00	035222
K34V-R1.5 Strip Blade (C17)	30751-01			035221
K34V-R2.0 Strip Blade (D2)	26793	0.15748	4.00	035224
K34V-R2.0 Strip Blade (C17)	30752-01			035223
K34V-R2.5 Strip Blade (D2)	26794	0.19685	5.00	035351
K34V-R2.5 Strip Blade (C17)	30753-01			035350
K34V-R3.0 Strip Blade (D2)	26795	0.23622	6.00	042255
K34V-R3.0 Strip Blade (C17)	30754-01			042254

A set of blades for the Komax 34, Kappa 210, 220 or 225 consists of two (2) K34 Strip Blades.

Mechtrix "Komax" Stripping Blades are protected by U.S. Patent 4,630,406 and U.S. Patent 4,577,405



WIRELEASE • 30 Rue du Bois Moussay • 93240 STAINS
Tel : 0033 (0)1 49 51 51 45 • Fax : 0033 (0)1 49 51 51 50 • www.wirelease.fr

Komax Tooling

Komax 34 and Kappa 210, 220, 225 and 320 Stripping Blades

Used In These Machines

Komax
34
Kappa 210
Kappa 220
Kappa 225
Kappa 320

In addition to the "Universal" Stripping Blades, Mechtrix also offers both our patented M-Series and Full Radius stripping form geometries for processing difficult insulations in the Komax 34, Kappa 210, 220, 225 and 320 Machines. Please contact Mechtrix for assistance in selecting the appropriate style and size blade for your unique application.



Komax 34 and Kappa 210, 220, 225 and 320 M-Series Blades

Mechtrix Description	Mechtrix Part Number	Blade Form Diameter		OEM Part Number
		(in)	(mm)	
M-Series Blades are available in 0.1mm increments in the following sizes: K34M-0.3 thru K34M-11.0	-	-	-	-



Komax 34 and Kappa 210, 220, 225 and 320 Full Radius Blades

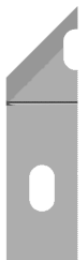
Mechtrix Description	Mechtrix Part Number	Blade Form Diameter		OEM Part Number
		(in)	(mm)	
Full Radius Blades are available in 0.1mm increments in the following sizes: K34-0.4D thru K34-11.0D	-	-	-	-

CR-701 Rotary Stripping Attachment

Used In These Machines

Komax
CR-701

The Komax CR-701 Rotary Stripping Attachment is used in conjunction with a Komax 34 Machines when processing coaxial cable. Mechtrix blades for the CR-701 Machines are made to precision standards from a specially selected tungsten carbide to insure optimum performance and blade life. Please contact Mechtrix for assistance in selecting the appropriate blade for your particular application.



Komax CR-701 Blades

Mechtrix Description	Mechtrix Part Number	Blade Form Diameter		OEM Part Number
		(in)	(mm)	
Komax CR-701/CMS-801 Blade (Carbide)	12097	-	-	-

Mechtrix "Komax" Stripping Blades are protected by U.S. Patent 4,630,406 and U.S. Patent 4,577,405



WIRELEASE • 30 Rue du Bois Moussay • 93240 STAINS
Tel : 0033 (0)1 49 51 51 45 • Fax : 0033 (0)1 49 51 51 50 • www.wirelease.fr

Komax Tooling

Komax 35 Stripping Blades

Used In These Machines

Komax 35

The Komax 35 Machines use a single set of "Universal" Stripping Blades to remove the insulation from the end of a wire. Mechtrix blades for the Komax 35 Machines are made to precision standards from a specially selected tool steel and micro-grain carbide to insure optimum performance and blade life. State-of-the-art manufacturing techniques are combined with Mechtrix patented technology to create perfect stripping form radii which produce the highest quality cutting tool possible.

In addition to the "Universal" Stripping Blades, Mechtrix also offers both our patented M-Series and Full Radius stripping form geometries for processing difficult insulations in the Komax 35 Machines. Please contact Mechtrix for assistance in selecting the appropriate style and size blade for your particular application.



Komax 35 Universal Blades

Mechtrix Description	Mechtrix Part Number	Blade Form Diameter		OEM Part Number
		(in)	(mm)	
KL33/35 (C15) Stripping Blade (S7)	01612-01	-	-	18810
KL33/35 (D2) Stripping Blade (S4)	01612-02	-	-	-
KL33/35 (C17) Stripping Blade (Ultra Hard)	01612-03	-	-	-



Komax 35 M-Series Blades

Mechtrix Description	Mechtrix Part Number	Blade Form Diameter		OEM Part Number
		(in)	(mm)	
M-Series Blades are available in 0.1mm increments in the following sizes: KL33/35M-0.3 thru KL33/35M-7.0 Long	-	-	-	-



Komax 35 Full Radius Blades

Mechtrix Description	Mechtrix Part Number	Blade Form Diameter		OEM Part Number
		(in)	(mm)	
Full Radius Blades are available in 0.1mm increments in the following sizes: KL33/35-0.4D thru KL33/35-7.0D Long	-	-	-	-

A set of blades for the Komax 35 consists of two (2) KL33/35 Strip Blades-Long.



Komax Tooling

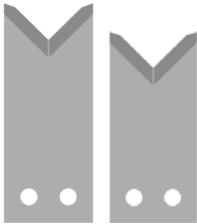
Komax 36 Stripping Blades

Used In These Machines

Komax 36

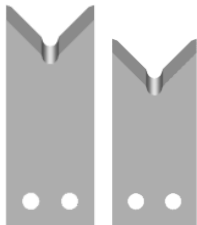
The Komax 36 Machines use a single set of "Universal" Stripping Blades to remove the insulation from the end of a wire. The Mechtrix blades for the Komax 36 Machines are made to precision standards from a specially selected tool steel and micro-grain carbide to insure optimum performance and blade life. State-of-the-art manufacturing techniques are combined with Mechtrix patented technology to create perfect stripping form radii which produce the highest quality cutting tool possible.

In addition to the "Universal" Stripping Blades, Mechtrix also offers our patented M-Series and Full Radius stripping form geometries for processing difficult insulations in the Komax 36 Machines. Please contact Mechtrix for assistance in selecting the appropriate style and size blade for your particular application.



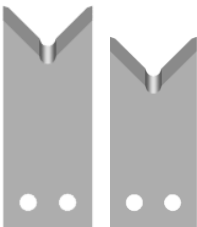
Komax 36 Universal Blades

Mechtrix Description	Mechtrix Part Number	Blade Form Diameter		OEM Part Number
		(in)	(mm)	
K36S (S7 ₅ U) Universal-Short	11725	-	-	030892
K36L (S7 ₅ D) Universal-Long	11726			



Komax 36 M-Series Blades

Mechtrix Description	Mechtrix Part Number	Blade Form Diameter		OEM Part Number
		(in)	(mm)	
M-Series Blades are available in 0.1mm increments in the following sizes: K36M-0.3 thru K36M-11.0 Long and Short	-	-	-	-



Komax 36 Full Radius Blades

Mechtrix Description	Mechtrix Part Number	Blade Form Diameter		OEM Part Number
		(in)	(mm)	
Full Radius Blades are available in 0.1mm increments in the following sizes: K36-0.4D thru K36-11.0D Long and Short	-	-	-	-

A set of blades for the Komax 36 consists of one (1) K36S Strip Blade-Short and one (1) K36L Strip Blade-Long.

Mechtrix "Komax" Stripping Blades are protected by U.S. Patent 4,630,406 and U.S. Patent 4,577,405



WIRELEASE • 30 Rue du Bois Moussay • 93240 STAINS
Tel : 0033 (0)1 49 51 51 45 • Fax : 0033 (0)1 49 51 51 50 • www.wirelease.fr

Komax Tooling

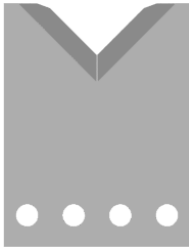
Komax Kappa 230, Kappa 235, Kappa 321 & Kappa 330 Stripping Blades

Used In These Machines

- Komax
- Kappa 230
- Kappa 235
- Kappa 321
- Kappa 330

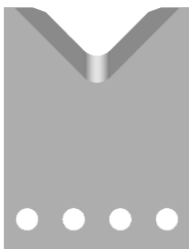
The Komax Kappa 230, 235, 321 and 330 Machines use a single set of "Universal" Stripping Blades to remove the insulation from the end of a wire. Mechtrix blades for the Kappa 230, 235, 321 and 330 Machines are made to precision standards from a specially selected tool steel and micro-grain carbide to insure optimum performance and blade life. State-of-the-art manufacturing techniques are combined with Mechtrix patented technology to create perfect stripping form radii which produce the highest quality cutting tool possible.

In addition to the "Universal" Stripping Blades, Mechtrix also offers the Komax Style Radius "V" Stripping Blades for processing larger cables or cables with difficult to strip insulations in the Kappa 230, 235, 321 and 330 Machines. Please contact Mechtrix for assistance in selecting the appropriate style and size blade for your application.



Kappa 230, 235, 321 and 330 Universal Blades

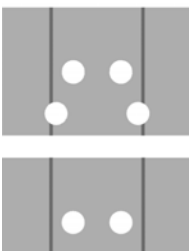
Mechtrix Description	Mechtrix Part Number	Blade Form Diameter		OEM Part Number
		(in)	(mm)	
K230UV Universal Strip Blade (Carbide)	20210-01	-	-	056612
K230UV Universal Strip Blade (D2-Tool Steel)	20210-02	-	-	056611



Kappa 230, 235, 321 and 330 Radius V-Blades

Mechtrix Description	Mechtrix Part Number	Blade Form Diameter		OEM Part Number
		(in)	(mm)	
K230-R2 Strip Blade (Carbide)	18762-01	0.15748	4.00	044211
K230-R2 Strip Blade (D2-Tool Steel)	18762-02			044128
K230-R2.5 Strip Blade (Carbide)	18763-01	0.19685	5.00	044212
K230-R2.5 Strip Blade (D2-Tool Steel)	18763-02			044127
K230-R3 Strip Blade (Carbide)	18764-01	0.23622	6.00	044213
K230-R3 Strip Blade (D2-Tool Steel)	18764-02			043912
K230-R4 Strip Blade (Carbide)	18765-01	0.31496	8.00	044214
K230-R4 Strip Blade (D2-Tool Steel)	18765-02			043913
K230-R5 Strip Blade (Carbide)	18766-01	0.39370	10.00	044215
K230-R5 Strip Blade (D2-Tool Steel)	18766-02			043914
K230-R6 Strip Blade (Carbide)	18767-01	0.47244	12.00	044216
K230-R6 Strip Blade (D2-Tool Steel)	18767-02			043915

A set of blades for the Komax Kappa 230, 235, 321 and 330 consists of two (2) Strip Blades.



Kappa 230 and 235 Retrofit Kits

Mechtrix Description	Mechtrix Part Number	Blade Form Diameter		OEM Part Number
		(in)	(mm)	
Kappa 230 Retro-fit Kit (Allows Komax 34 and Kappa 210, 220, 225 Blades to run in the 230)	19881-500	-	-	044121
Kappa 235 Retro-fit Kit (Allows Komax 34 and Kappa 210, 220, 225 Blades to run in the 235)	27352-500	-	-	-

Mechtrix "Komax" Stripping Blades are protected by U.S. Patent 4,630,406 and U.S. Patent 4,577,405



WIRELEASE • 30 Rue du Bois Moussay • 93240 STAINS
Tel : 0033 (0)1 49 51 51 45 • Fax : 0033 (0)1 49 51 51 50 • www.wirelease.fr

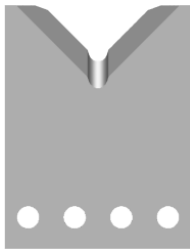
Komax Tooling

Komax Kappa 230, Kappa 235, Kappa 321 & Kappa 330 Stripping Blades

Used In These Machines

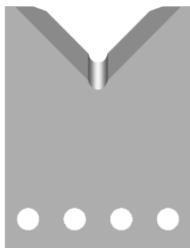
Komax
Kappa 230
Kappa 235
Kappa 320
Kappa 321

In addition to the standard replacement stripping blades for the Komax Kappa 230 and 235 Machines, Mechtrix also offers our "M" Series and Full Radius Stripping Blades. "M" Series Stripping Blades incorporate a Mechtrix patented blade design which offers a compound entry angle into the cutting portion of the blade. This design feature, while continuing to offer the advantages of a "V" type design (excellent wire gathering and adjustability) facilitates a higher degree of circumferential cut around a wire's conductor. "M" Series and Full Radius Blades offer improved performance when processing wire which require a cutting configuration which closely matches the wire's conductor diameter. This feature is of greatest benefit when processing insulations which are either very soft, very hard and thin or just very thin. Please contact Mechtrix for assistance in selecting the appropriate style and size blade for your particular application.



Kappa 230, 235, 321 and 330 M-Series Blades

Mechtrix Description	Mechtrix Part Number	Blade Form Diameter		OEM Part Number
		(in)	(mm)	
M-Series Blades are available in 0.1mm increments in the following sizes: K230M-0.3 thru K230M-15.0	-	-	-	-



Kappa 230, 235, 321 and 330 Full Radius Blades

Mechtrix Description	Mechtrix Part Number	Blade Form Diameter		OEM Part Number
		(in)	(mm)	
Full Radius Blades are available in 0.1mm increments in the following sizes: K230-0.4D thru K230-15.0D	-	-	-	-

A set of blades for the Komax Kappa 230, 235, 321 and 330 consists of two (2) Strip Blades.

Komax Kappa 230 Flat Ribbon Cable Processing Machines

Mechtrix can also manufacture blades for the Komax Kappa 230 Machines which are used when processing flat cables. Please contact Mechtrix for assistance in selecting the appropriate style and size blade for your particular application.

Mechtrix "Komax" Stripping Blades are protected by U.S. Patent 4,630,406 and U.S. Patent 4,577,405



WIRELEASE • 30 Rue du Bois Moussay • 93240 STAINS
Tel : 0033 (0)1 49 51 51 45 • Fax : 0033 (0)1 49 51 51 50 • www.wirelease.fr

Komax Tooling

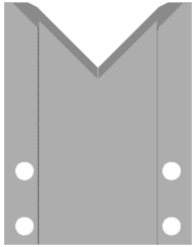
Komax Kappa 240 Stripping Blades

Used In These
Machines

Komax
Kappa 240

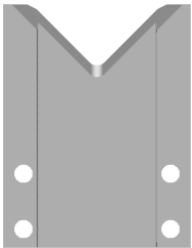
The Komax Kappa 240 Machines use a single set of "Universal" Stripping Blades to remove the insulation from the end of a wire. Mechtrix blades for these Komax Machines are made to precision standards from a specially selected tool steel to insure optimum performance and blade life. State-of-the-art manufacturing techniques are combined with Mechtrix patented technology to create perfect stripping form radii which produce the highest quality cutting tool possible.

In addition to the "Universal" Stripping Blades, Mechtrix also offers both our patented M-Series and Full Radius stripping form geometries for processing difficult insulations in the Komax Kappa 240 Machines. Please contact Mechtrix for assistance in selecting the appropriate style and size blade for your unique application.



Komax Kappa 240 Universal Stripping Blades

Mechtrix Description	Mechtrix Part Number	Blade Form Diameter		OEM Part Number
		(in)	(mm)	
K240UV Universal Strip Blade (D2)	24467	-	-	053884
K240UV-HD Universal Strip Blade (D2)	29184	-	-	062765
K240UV-Double Angle Universal Strip Blade (D2)	29185	-	-	066350



Komax Kappa 240 Radius V-Blades

Mechtrix Description	Mechtrix Part Number	Blade Form Diameter		OEM Part Number
		(in)	(mm)	
K240-R2.0 Radius Strip Blade (D2)	31379	0.15748	4.00	058233
K240-R3.0 Radius Strip Blade (D2)	29487	0.23622	6.00	058235
K240-R4.0 Radius Strip Blade (D2)	25936	0.31496	8.00	058237
K240-R6.0 Radius Strip Blade (D2)	31504	0.23622	6.00	

A set of blades for the Komax Kappa 240 consists of two (2) K240 Strip Blades.



Komax Kappa 240 Slitting Blades

Mechtrix Description	Mechtrix Part Number	Blade Form Diameter		OEM Part Number
		(in)	(mm)	
K240 Slitting Blade (D2)	28199	-	-	052186



WIRELEASE • 30 Rue du Bois Moussay • 93240 STAINS
Tel : 0033 (0)1 49 51 51 45 • Fax : 0033 (0)1 49 51 51 50 • www.wirelease.fr

Komax Tooling

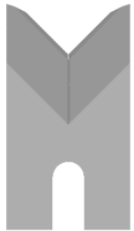
Komax Kappa 310 Stripping Blades

Used In These Machines

Komax
Kappa 310

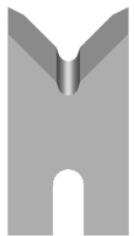
The Komax Kappa 310 Machines use a single set of "Universal" Stripping Blades to remove the insulation from the end of a wire. Mechtrix blades for the Komax Kappa 310 Machines are made to precision standards from a specially selected tool steel and micro-grain carbide to insure optimum performance and blade life. State-of-the-art manufacturing techniques are combined with Mechtrix patented technology to create perfect stripping form radii which produce the highest quality cutting tool possible.

In addition to the "Universal" Stripping Blades, Mechtrix also offers both our patented M-Series and Full Radius stripping form geometries for processing difficult insulations in the Komax Kappa 310 Machines. Please contact Mechtrix for assistance in selecting the appropriate style and size blade for your particular application.



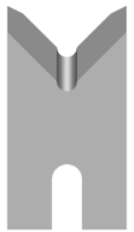
Komax Kappa 310 Universal Blades

Mechtrix Description	Mechtrix Part Number	Blade Form Diameter		OEM Part Number
		(in)	(mm)	
K310UV Stripping Blade (Carbide)	32365-02	-	-	310527
K310UV Stripping Blade (D2)	32365-01	-	-	311494



Komax Kappa 310 M-Series Blades

Mechtrix Description	Mechtrix Part Number	Blade Form Diameter		OEM Part Number
		(in)	(mm)	
M-Series Blades are available in 0.1mm increments in the following sizes: K310M-0.3 thru K310-7.0 Long	-	-	-	-



Komax Kappa 310 Full Radius Blades

Mechtrix Description	Mechtrix Part Number	Blade Form Diameter		OEM Part Number
		(in)	(mm)	
Full Radius Blades are available in 0.1mm increments in the following sizes: K310-0.4D thru K310-7.0D Long	-	-	-	310697-X.X

A set of blades for the Komax Kappa 310 consists of two (2) K310 Strip Blades.



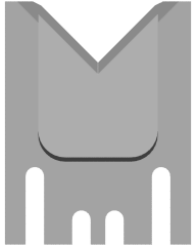
Komax Tooling

Komax Kappa 350 Stripping Blades

Used In These Machines

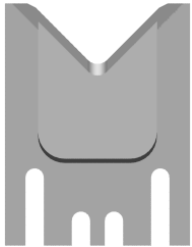
Komax
Kappa 350

The Komax Kappa 350 Machines use two sets of blades. A set of "Universal" Blades to cut the wire to length and another set of Stripping Blades to remove the insulation from the end of the wire. Mechtrix blades for the Komax Kappa 350 Machines are made to precision standards from a specially selected tool steel to insure optimum performance and blade life. State-of-the-art manufacturing techniques are combined with Mechtrix patented technology to create perfect stripping form radii which produce the highest quality cutting tool possible.



Komax 350 Universal Blades

Mechtrix Description	Mechtrix Part Number	Blade Form Diameter		OEM Part Number
		(in)	(mm)	
K350UV Stripping Blade	31947	-	-	



Komax 350 Radius V-Blades

Mechtrix Description	Mechtrix Part Number	Blade Form Diameter		OEM Part Number
		(in)	(mm)	
K350-R1.0 Strip Blade	31948	0.07874	2.00	
K350-R1.5 Strip Blade	31949	0.11811	3.00	
K350-R2.0 Strip Blade	31950	0.15748	4.00	
K350-R2.5 Strip Blade	31951	0.19685	5.00	
K350-R3.0 Strip Blade	31952	0.23622	6.00	
K350-R3.5 Strip Blade	31953	0.27559	7.00	
K350-R4.0 Strip Blade	30451	0.31496	8.00	300108
K350-R4.5 Strip Blade	31895	0.35433	9.00	303747
K350-R5.0 Strip Blade	31954	0.39370	10.00	
K350-R5.5 Strip Blade	31955	0.43307	11.00	
K350-R6.0 Strip Blade	31956	0.47244	12.00	
K350-R6.5 Strip Blade	31957	0.51181	13.00	
K350-R7.0 Strip Blade	31958	0.55118	14.00	
K350-R7.5 Strip Blade	31959	0.59055	15.00	

A set of blades for the Komax Kappa 350 consists of two (2) Universal/Cut-off Blades & two (2) K350 Strip Blades.

Mechtrix "Komax" Stripping Blades are protected by U.S. Patent 4,630,406 and U.S. Patent 4,577,405



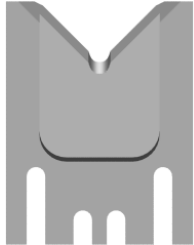
WIRELEASE • 30 Rue du Bois Moussay • 93240 STAINS
Tel : 0033 (0)1 49 51 51 45 • Fax : 0033 (0)1 49 51 51 50 • www.wirelease.fr

Komax Tooling

Komax Kappa 350 Stripping Blades

Used In These
Machines

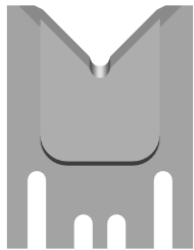
Komax
Kappa 350



In addition to the "Universal" Stripping Blades, Mechtrix also offers both our patented M-Series and Full Radius stripping form geometries for processing difficult insulations in the Komax Kappa 350 Machines. Please contact Mechtrix for assistance in selecting the appropriate style and size blade for your unique application.

Komax 350 M-Series Blades

Mechtrix Description	Mechtrix Part Number	Blade Form Diameter		OEM Part Number
		(in)	(mm)	
M-Series Blades are available in 0.1mm increments in the following sizes: K350M-2.0 thru K350M-15.0	-	-	-	-



Komax 350 Full Radius Blades

Mechtrix Description	Mechtrix Part Number	Blade Form Diameter		OEM Part Number
		(in)	(mm)	
K350-1.0D Strip Blade	31960	0.03937	1.00	302326
K350-1.5D Strip Blade	31961	0.05906	1.50	
K350-2.0D Strip Blade	31962	0.07874	2.00	302327
K350-2.5D Strip Blade	31963	0.09843	2.50	
K350-3.0D Strip Blade	31964	0.11811	3.00	302328
K350-3.5D Strip Blade	31965	0.13780	3.50	
K350-4.0D Strip Blade	31966	0.15748	4.00	302329
K350-4.5D Strip Blade	31967	0.17717	4.50	
K350-5.0D Strip Blade	31916	0.19685	5.00	302330
K350-5.5D Strip Blade	31968	0.21654	5.50	
K350-6.0D Strip Blade	31969	0.23622	6.00	302331
K350-6.5D Strip Blade	31970	0.25591	6.50	
K350-7.0D Strip Blade	31971	0.27559	7.00	302332
K350-7.5D Strip Blade	31972	0.29528	7.50	
K350-8.0D Strip Blade	31973	0.31496	8.00	302333
K350-8.5D Strip Blade	31974	0.33465	8.50	
K350-9.0D Strip Blade	31975	0.35433	9.00	302334
K350-9.5D Strip Blade	31976	0.37402	9.50	
K350-10.0D Strip Blade	31977	0.39370	10.00	302335
K350-10.5D Strip Blade	31978	0.41339	10.50	
K350-11.0D Strip Blade	31979	0.43307	11.00	302336
K350-11.5D Strip Blade	31980	0.45276	11.50	
K350-12.0D Strip Blade	31981	0.47244	12.00	302337
K350-12.5D Strip Blade	31982	0.49213	12.50	
K350-13.0D Strip Blade	31983	0.51181	13.00	302338
K350-13.5D Strip Blade	31984	0.53150	13.50	
K350-14.0D Strip Blade	31985	0.55118	14.00	302339
K350-14.5D Strip Blade	31986	0.57087	14.50	
K350-15.5D Strip Blade	31987	0.59055	15.00	302340

A set of blades for the Komax Kappa 350 consists of two (2) Universal/Cut-off Blades & two (2) K350 Strip Blades.



WIRELEASE • 30 Rue du Bois Moussay • 93240 STAINS
Tel : 0033 (0)1 49 51 51 45 • Fax : 0033 (0)1 49 51 51 50 • www.wirelease.fr

Komax Tooling

"KD" Series Stripping Blades for Komax 40, 41, 42 and 43 Machines

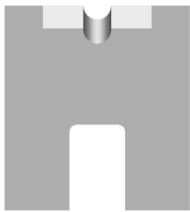
Used In These Machines

- Komax 30/31
- 40
- 41
- 42
- 43

Mechtrix "KD" Series Stripping Blades are designed for use in the Komax 40, 41, 42 and 43 Wire Processing Machines and for the Komax 30/31 Machine when processing discrete wire. "KD" Series Stripping Blades are made to precision standards from a specially selected tool steel to insure optimum performance and blade life. State-of-the-art manufacturing techniques are combined with Mechtrix patented technology to create perfect stripping form radii which produce the highest quality cutting tool possible.

"KD" Series "Die-type" Stripping Blades incorporate several important features. First, because the blades close against each other, the closing dimension of the machine cutterhead is assured as is the formation of the optimum blade hole size for the blade being used. Second, set-up time is minimized because no adjustments (to the machine cutterhead) are required when changing blade sizes. Though "KD" Series Blades are not adjustable, their non-adjustable feature is of significant benefit when processing thin wall insulations, very hard insulations (Teflon, etc.) or wire with multiple layer insulations (fusible link, etc.).

"KD" Series Blades are available in blade hole size increments of 0.05mm (.002") and require the use of "KDG" Wire Guides. "KD" Series Blades are also available with the gold titanium nitride coating, simply add the suffix -CT1 to the Mechtrix Part Number when ordering. Please contact Mechtrix for assistance in selecting the appropriate size blade for your particular application.



Standard "KD" Tooling Setup

No.	Part Description	Qty.	No.	Part Description	Qty.
1	KD Stripping Blade	4	5	Komax Toolholder	2
2	KDG Wire Guide	2	6	Komax Toolholder Pin	2
3	KDC Cut-off Blade	2	7	Komax T-Nut	2
4	Komax Spacer	-	8		

Mechtrix "KD" Stripping Blades are covered by U.S. Pat. 4,630,406

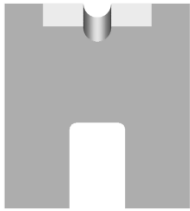


WIRELEASE • 30 Rue du Bois Moussay • 93240 STAINS
 Tel : 0033 (0)1 49 51 51 45 • Fax : 0033 (0)1 49 51 51 50 • www.wirelease.fr

Komax Tooling

Used In These
Machines

Komax
30/31
40
41
42
43



"KD" Die-Type Stripping Blades

Mechtrix Description	Mechtrix Part Number	Blade Form Diameter		OEM Part Number
		(in)	(mm)	
KD-0.25 Stripping Blade	05073	0.00984	0.25	003034
KD-0.30 Stripping Blade	02332	0.01181	0.30	003035
KD-0.35 Stripping Blade	08651	0.01339	0.35	003036
KD-0.40 Stripping Blade	02333	0.01575	0.40	003037
KD-0.45 Stripping Blade	18307	0.01772	0.45	003038
KD-0.50 Stripping Blade	02334	0.01969	0.50	003039
KD-0.55 Stripping Blade	18308	0.02165	0.55	010641
KD-0.60 Stripping Blade	02335	0.02362	0.60	003040
KD-0.65 Stripping Blade	18309	0.02559	0.65	010642
KD-0.70 Stripping Blade	02336	0.02756	0.70	003041
KD-0.75 Stripping Blade	18310	0.02953	0.75	010643
KD-0.80 Stripping Blade	02337	0.03150	0.80	003042
KD-0.85 Stripping Blade	17102	0.03346	0.85	010644
KD-0.90 Stripping Blade	02338	0.03543	0.90	003043
KD-0.95 Stripping Blade	16269	0.03740	0.95	010645
KD-1.00 Stripping Blade	02339	0.03937	1.00	003044
KD-1.05 Stripping Blade	18311	0.04134	1.05	010646
KD-1.10 Stripping Blade	02340	0.04331	1.10	003045
KD-1.15 Stripping Blade	14832	0.04528	1.15	010647
KD-1.20 Stripping Blade	02341	0.04724	1.20	003046
KD-1.25 Stripping Blade	17627	0.04921	1.25	010648
KD-1.30 Stripping Blade	02342	0.05118	1.30	003047
KD-1.35 Stripping Blade	10686	0.05315	1.35	010649
KD-1.40 Stripping Blade	02343	0.05512	1.40	003048
KD-1.45 Stripping Blade	15785	0.05709	1.45	010650
KD-1.50 Stripping Blade	02344	0.05906	1.50	003049
KD-1.55 Stripping Blade	17497	0.06102	1.55	010651
KD-1.60 Stripping Blade	02345	0.06299	1.60	003050
KD-1.65 Stripping Blade	18312	0.06496	1.65	010652
KD-1.70 Stripping Blade	02346	0.06693	1.70	003021
KD-1.75 Stripping Blade	18313	0.06890	1.75	010653
KD-1.80 Stripping Blade	02347	0.07087	1.80	003051
KD-1.85 Stripping Blade	18314	0.07283	1.85	010654
KD-1.90 Stripping Blade	02348	0.07480	1.90	003052
KD-1.95 Stripping Blade	18315	0.07677	1.95	010655
KD-2.00 Stripping Blade	02349	0.07874	2.00	003053
KD-2.10 Stripping Blade	02350	0.08268	2.10	003054
KD-2.20 Stripping Blade	02351	0.08661	2.20	003055
KD-2.30 Stripping Blade	02352	0.09055	2.30	003056
KD-2.40 Stripping Blade	02353	0.09449	2.40	003057
KD-2.50 Stripping Blade	02354	0.09843	2.50	003058
KD-2.60 Stripping Blade	02355	0.10236	2.60	003059
KD-2.70 Stripping Blade	02356	0.10630	2.70	003060
KD-2.80 Stripping Blade	02357	0.11024	2.80	003061
KD-2.90 Stripping Blade	02358	0.11417	2.90	003062
KD-3.00 Stripping Blade	02359	0.11811	3.00	003063

Mechtrix "KD" Stripping Blades are covered by U.S. Pat. 4,630,406

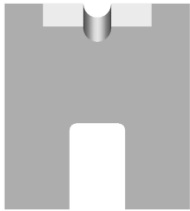


WIRELEASE • 30 Rue du Bois Moussay • 93240 STAINS
Tel : 0033 (0)1 49 51 51 45 • Fax : 0033 (0)1 49 51 51 50 • www.wirelease.fr

Komax Tooling

Used In These
Machines

Komax
30/31
40
41
42
43



"KD" Die-Type Stripping Blades (continued)

Mechtrix Description	Mechtrix Part Number	Blade Form Diameter		OEM Part Number
		(in)	(mm)	
KD-3.10 Stripping Blade	07498	0.12205	3.10	003064
KD-3.20 Stripping Blade	01831	0.12598	3.20	003065
KD-3.30 Stripping Blade	04360	0.12992	3.30	003066
KD-3.40 Stripping Blade	02651	0.13386	3.40	003067
KD-3.50 Stripping Blade	04301	0.13780	3.50	003068
KD-3.60 Stripping Blade	02652	0.14173	3.60	003069
KD-3.70 Stripping Blade	07250	0.14567	3.70	003070
KD-3.80 Stripping Blade	02653	0.14961	3.80	003071
KD-3.90 Stripping Blade	05059	0.15354	3.90	003072
KD-4.00 Stripping Blade	02654	0.15748	4.00	003073
KD-4.10 Stripping Blade	05039	0.16141	4.10	003074
KD-4.20 Stripping Blade	02655	0.16535	4.20	003075
KD-4.30 Stripping Blade	05040	0.16929	4.30	003076
KD-4.40 Stripping Blade	02656	0.17322	4.40	003077
KD-4.50 Stripping Blade	06932	0.17717	4.50	003078
KD-4.60 Stripping Blade	02657	0.18110	4.60	003079
KD-4.70 Stripping Blade	04391	0.18504	4.70	003080
KD-4.80 Stripping Blade	02658	0.18898	4.80	003081
KD-4.90 Stripping Blade	05041	0.19291	4.90	003082
KD-5.00 Stripping Blade	02659	0.19685	5.00	003083
KD-5.10 Stripping Blade	05060	0.20079	5.10	003084
KD-5.20 Stripping Blade	05081	0.20472	5.20	003085
KD-5.30 Stripping Blade	04361	0.20866	5.30	003086
KD-5.40 Stripping Blade	05061	0.21260	5.40	003087
KD-5.50 Stripping Blade	04999	0.21654	5.50	003088
KD-5.60 Stripping Blade	05062	0.22047	5.60	003089
KD-5.70 Stripping Blade	05063	0.22441	5.70	003090
KD-5.80 Stripping Blade	05064	0.22835	5.80	003091
KD-5.90 Stripping Blade	05100	0.23228	5.90	003092
KD-6.00 Stripping Blade	05034	0.23622	6.00	003093
KD-6.10 Stripping Blade	05065	0.24016	6.10	003094
KD-6.20 Stripping Blade	04494	0.24409	6.20	003095
KD-6.30 Stripping Blade	05082	0.24803	6.30	003096
KD-6.40 Stripping Blade	05083	0.25197	6.40	003097
KD-6.50 Stripping Blade	05035	0.25591	6.50	003098
KD-6.60 Stripping Blade	04362	0.25984	6.60	003099
KD-6.70 Stripping Blade	08431	0.26378	6.70	003100
KD-6.80 Stripping Blade	13058	0.26772	6.80	003101
KD-6.90 Stripping Blade	13059	0.27165	6.90	003102
KD-7.00 Stripping Blade	08796	0.27559	7.00	003103
KD-7.10 Stripping Blade	07606	0.27953	7.10	003104
KD-7.20 Stripping Blade	12096	0.28346	7.20	003105
KD-7.30 Stripping Blade	18316	0.28740	7.30	003106
KD-7.40 Stripping Blade	07784	0.29134	7.40	003107
KD-7.50 Stripping Blade	07607	0.29528	7.50	003108
KD-7.60 Stripping Blade	16844	0.29921	7.60	003109

Mechtrix "KD" Stripping Blades are covered by U.S. Pat. 4,630,406

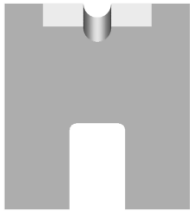


WIRELEASE • 30 Rue du Bois Moussay • 93240 STAINS
Tel : 0033 (0)1 49 51 51 45 • Fax : 0033 (0)1 49 51 51 50 • www.wirelease.fr

Komax Tooling

Used In These
Machines

Komax
30/31
40
41
42
43



"KD" Die-Type Stripping Blades (continued)

Mechtrix Description	Mechtrix Part Number	Blade Form Diameter		OEM Part Number
		(in)	(mm)	
KD-7.70 Stripping Blade	18317	0.30315	7.70	003110
KD-7.80 Stripping Blade	18318	0.30709	7.80	003111
KD-7.90 Stripping Blade	18319	0.31102	7.90	003112
KD-8.00 Stripping Blade	08416	0.31496	8.00	003113
KD-8.10 Stripping Blade	18320	0.31890	8.10	003114
KD-8.20 Stripping Blade	18321	0.32283	8.20	003115
KD-8.30 Stripping Blade	18322	0.32677	8.30	003116
KD-8.40 Stripping Blade	18323	0.33071	8.40	003117
KD-8.50 Stripping Blade	08415	0.33465	8.50	003118
KD-8.60 Stripping Blade	18324	0.33858	8.60	003119
KD-8.70 Stripping Blade	18325	0.34252	8.70	003120
KD-8.80 Stripping Blade	18326	0.34646	8.80	003121
KD-8.90 Stripping Blade	19434	0.35039	8.90	003122
KD-9.00 Stripping Blade	08414	0.35433	9.00	003123
KD-9.10 Stripping Blade	18328	0.35827	9.10	003124
KD-9.20 Stripping Blade	18329	0.36220	9.20	003125
KD-9.30 Stripping Blade	08797	0.36614	9.30	003126
KD-9.40 Stripping Blade	18330	0.37008	9.40	003127
KD-9.50 Stripping Blade	18331	0.37402	9.50	003128
KD-9.60 Stripping Blade	18332	0.37795	9.60	003129
KD-9.70 Stripping Blade	18333	0.38189	9.70	003130
KD-9.80 Stripping Blade	18334	0.38583	9.80	003131
KD-9.90 Stripping Blade	18335	0.38976	9.90	003132
KD-10.0 Stripping Blade	18336	0.39370	10.00	003133



"KDC" Cut-Off Blades

Mechtrix Description	Mechtrix Part Number	Blade Form Diameter		OEM Part Number
		(in)	(mm)	
KDC-1.0mm	07791	-	-	010283
KDC-1.5mm	00573	-	-	-
KDC-2.0mm	11141	-	-	003020

A complete set of KD/KDC/KDG tooling consists of four (4) KD Strip Blades, two (2) KDC Cut-off Blades and two (2) KDG Wire Guides.



WIRELEASE • 30 Rue du Bois Moussay • 93240 STAINS
Tel : 0033 (0)1 49 51 51 45 • Fax : 0033 (0)1 49 51 51 50 • www.wirelease.fr

Komax Tooling

Used In These
Machines

Komax
30/31
40
41
42
43



"KDG" Wire Guides

Mechtrix Description	Mechtrix Part Number	Guide Form Diameter		OEM Part Number
		(in)	(mm)	
KDG-0.5 Wire Guide	02559	0.01969	0.50	003134
KDG-0.6 Wire Guide	02560	0.02362	0.60	003135
KDG-0.7 Wire Guide	02561	0.02756	0.70	003136
KDG-0.8 Wire Guide	02562	0.03150	0.80	003137
KDG-0.9 Wire Guide	02563	0.03543	0.90	003138
KDG-1.0 Wire Guide	02564	0.03937	1.00	003139
KDG-1.1 Wire Guide	02565	0.04331	1.10	003140
KDG-1.2 Wire Guide	02566	0.04724	1.20	003141
KDG-1.3 Wire Guide	02567	0.05118	1.30	003142
KDG-1.4 Wire Guide	02568	0.05512	1.40	003143
KDG-1.5 Wire Guide	02569	0.05906	1.50	003144
KDG-1.6 Wire Guide	02570	0.06299	1.60	003145
KDG-1.7 Wire Guide	02571	0.06693	1.70	003146
KDG-1.8 Wire Guide	02572	0.07087	1.80	003147
KDG-1.9 Wire Guide	02573	0.07480	1.90	003148
KDG-2.0 Wire Guide	02574	0.07874	2.00	003149
KDG-2.1 Wire Guide	02575	0.08268	2.10	003150
KDG-2.2 Wire Guide	02576	0.08661	2.20	003151
KDG-2.3 Wire Guide	02577	0.09055	2.30	003152
KDG-2.4 Wire Guide	02578	0.09449	2.40	003153
KDG-2.5 Wire Guide	02579	0.09843	2.50	003154
KDG-2.6 Wire Guide	02580	0.10236	2.60	003155
KDG-2.7 Wire Guide	02581	0.10630	2.70	003023
KDG-2.8 Wire Guide	02582	0.11024	2.80	003156
KDG-2.9 Wire Guide	02583	0.11417	2.90	003157
KDG-3.0 Wire Guide	02584	0.11811	3.00	003158
KDG-3.1 Wire Guide	07408	0.12205	3.10	003159
KDG-3.2 Wire Guide	02585	0.12598	3.20	003160
KDG-3.3 Wire Guide	06823	0.12992	3.30	003161
KDG-3.4 Wire Guide	02586	0.13386	3.40	003162
KDG-3.5 Wire Guide	06824	0.13780	3.50	003163
KDG-3.6 Wire Guide	02587	0.14173	3.60	003164
KDG-3.7 Wire Guide	04989	0.14567	3.70	003165
KDG-3.8 Wire Guide	02588	0.14961	3.80	003166
KDG-3.9 Wire Guide	04294	0.15354	3.90	003167
KDG-4.0 Wire Guide	02589	0.15748	4.00	003168
KDG-4.1 Wire Guide	12125	0.16141	4.10	003169
KDG-4.2 Wire Guide	02590	0.16535	4.20	003170
KDG-4.3 Wire Guide	05066	0.16929	4.30	003171
KDG-4.4 Wire Guide	02591	0.17322	4.40	003172
KDG-4.5 Wire Guide	04295	0.17717	4.50	003173
KDG-4.6 Wire Guide	02592	0.18110	4.60	003174
KDG-4.7 Wire Guide	08397	0.18504	4.70	003175
KDG-4.8 Wire Guide	02593	0.18898	4.80	003176
KDG-4.9 Wire Guide	04674	0.19291	4.90	003177
KDG-5.0 Wire Guide	02594	0.19685	5.00	003178
KDG-5.1 Wire Guide	04358	0.20079	5.10	003179
KDG-5.2 Wire Guide	02660	0.20472	5.20	003180



WIRELEASE • 30 Rue du Bois Moussay • 93240 STAINS
Tel : 0033 (0)1 49 51 51 45 • Fax : 0033 (0)1 49 51 51 50 • www.wirelease.fr

Komax Tooling

Used In These
Machines

Komax
30/31
40
41
42
43



"KDG" Wire Guides (continued)

Mechtrix Description	Mechtrix Part Number	Guide Form Diameter		OEM Part Number
		(in)	(mm)	
KDG-5.3 Wire Guide	07456	0.20866	5.30	003181
KDG-5.4 Wire Guide	02661	0.21260	5.40	003182
KDG-5.5 Wire Guide	04296	0.21654	5.50	003183
KDG-5.6 Wire Guide	02662	0.22047	5.60	003184
KDG-5.7 Wire Guide	07601	0.22441	5.70	003185
KDG-5.8 Wire Guide	02663	0.22835	5.80	003186
KDG-5.9 Wire Guide	12126	0.23228	5.90	003187
KDG-6.0 Wire Guide	02664	0.23622	6.00	003188
KDG-6.1 Wire Guide	07524	0.24016	6.10	003189
KDG-6.2 Wire Guide	03067	0.24409	6.20	003190
KDG-6.3 Wire Guide	10787	0.24803	6.30	003191
KDG-6.4 Wire Guide	03068	0.25197	6.40	003192
KDG-6.5 Wire Guide	05071	0.25591	6.50	003193
KDG-6.6 Wire Guide	03069	0.25984	6.60	003194
KDG-6.7 Wire Guide	12238	0.26378	6.70	003195
KDG-6.8 Wire Guide	04527	0.26772	6.80	003196
KDG-6.9 Wire Guide	13342	0.27165	6.90	003197
KDG-7.0 Wire Guide	08794	0.27559	7.00	003198
KDG-7.1 Wire Guide	11706	0.27953	7.10	003199
KDG-7.2 Wire Guide	13561	0.28346	7.20	003200
KDG-7.3 Wire Guide	05067	0.28740	7.30	003201
KDG-7.4 Wire Guide	16538	0.29134	7.40	003202
KDG-7.5 Wire Guide	17999	0.29528	7.50	003203
KDG-7.6 Wire Guide	07409	0.29921	7.60	003204
KDG-7.7 Wire Guide	07410	0.30315	7.70	003205
KDG-7.8 Wire Guide	07785	0.30709	7.80	003206
KDG-7.9 Wire Guide	07403	0.31102	7.90	003207
KDG-8.0 Wire Guide	09283	0.31496	8.00	003208
KDG-8.1 Wire Guide	12881	0.31890	8.10	003209
KDG-8.2 Wire Guide	04359	0.32283	8.20	003210
KDG-8.3 Wire Guide	12747	0.32677	8.30	003211
KDG-8.4 Wire Guide	08334	0.33071	8.40	003212
KDG-8.5 Wire Guide	04495	0.33465	8.50	003213
KDG-8.6 Wire Guide	16482	0.33858	8.60	003214
KDG-8.7 Wire Guide	08430	0.34252	8.70	003215
KDG-8.8 Wire Guide	16845	0.34646	8.80	003216
KDG-8.9 Wire Guide	15964	0.35039	8.90	003217
KDG-9.0 Wire Guide	13666	0.35433	9.00	003218
KDG-9.1 Wire Guide	21384	0.35827	9.10	003219
KDG-9.2 Wire Guide	17780	0.36220	9.20	003220
KDG-9.3 Wire Guide	17781	0.36614	9.30	003221
KDG-9.4 Wire Guide	14245	0.37008	9.40	003222
KDG-9.5 Wire Guide	17783	0.37402	9.50	003223
KDG-9.6 Wire Guide	17784	0.37795	9.60	003224
KDG-9.7 Wire Guide	12239	0.38189	9.70	003225
KDG-9.8 Wire Guide	17786	0.38583	9.80	003226
KDG-9.9 Wire Guide	17787	0.38976	9.90	003227
KDG-10.0 Wire Guide	08430	0.39370	10.00	003228



WIRELEASE • 30 Rue du Bois Moussay • 93240 STAINS
Tel : 0033 (0)1 49 51 51 45 • Fax : 0033 (0)1 49 51 51 50 • www.wirelease.fr

Komax Tooling

"KV" Series Stripping Blades for Komax 40, 41, 42 and 43 Machines

Used In These Machines

- Komax
- 40
- 41
- 42
- 43

Mechtrix "KV" Series Stripping Blades are used in Komax 40, 41, 42 and 43 Wire Processing Machines. "KV" Series Stripping Blades are made to precision standards from a specially selected tool steel to insure optimum performance and blade life and are produced using state-of-the-art manufacturing techniques. "KV" Series Stripping Blades have the Mechtrix patented feature of a cutting form which includes a perfectly formed cutting radius. The perfectly formed cutting radius insures optimum cutting of the insulation while the entry angle improves the blade's "gathering" characteristics, thus eliminating the need for wire guides.

"KV" Series Stripping Blades are a "V-type" blade and offer several advantages over "die-type" blades. These advantages include adjustability over a range of conductor diameters (rather than being sized for only one conductor diameter as is a die-type blade), superior cutting and gathering ability, and longer blade life. Please contact Mechtrix for assistance in selecting the appropriate size blade for your particular application.



Standard "KV" Tooling Setup

No.	Part Description	Qty.	No.	Part Description	Qty.
1	KV Stripping Blade-Short	2	5	Komax Toolholder	2
2	KV Stripping Blade-Long	2	6	Komax Toolholder Pin	2
3	KVC Cut-off Blade	2	7	Komax T-Nut	2
4	Komax Spacer	-	8		

Mechtrix "KV" Stripping Blades are covered by U.S. Pat. 4,630,406



WIRELEASE • 30 Rue du Bois Moussay • 93240 STAINS
Tel : 0033 (0)1 49 51 51 45 • Fax : 0033 (0)1 49 51 51 50 • www.wirelease.fr

Komax Tooling

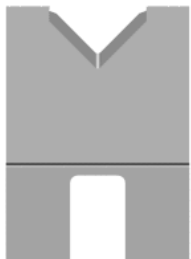
Used In These
Machines

- Komax
- 40
- 41
- 42
- 43



"KV" Series Stripping Blades

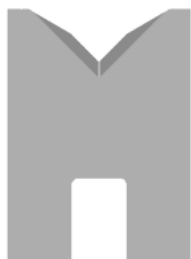
Mechtrix Description	Mechtrix Part Number	Blade Form Diameter		OEM Part Number
		(in)	(mm)	
KV-0.30 Stripping Blade-Short	01023	0.01181	0.30	-
KV-0.30L Stripping Blade-Long	01024			-
KV-0.55 Stripping Blade-Short	00646	0.02165	0.55	-
KV-0.55L Stripping Blade-Long	00647			-
KV-0.78 Stripping Blade-Short	00649	0.03071	0.78	-
KV-0.78L Stripping Blade-Long	00650			-
KV-1.13 Stripping Blade-Short	00652	0.04449	1.13	-
KV-1.13L Stripping Blade-Long	00653			-
KV-1.65 Stripping Blade-Short	00655	0.06496	1.65	-
KV-1.65L Stripping Blade-Long	00656			-
KV-2.09 Stripping Blade-Short	02521	0.08228	2.09	-
KV-2.09L Stripping Blade-Long	02520			-
KV-2.53 Stripping Blade-Short	00658	0.09961	2.53	-
KV-2.53L Stripping Blade-Long	00659			-
KV-3.01 Stripping Blade-Short	02518	0.11850	3.01	-
KV-3.01L Stripping Blade-Long	02517			-
KV-3.49 Stripping Blade-Short	00661	0.13740	3.49	-
KV-3.49L Stripping Blade-Long	00662			-
KV-4.37 Stripping Blade-Short	00664	0.17205	4.37	-
KV-4.37L Stripping Blade-Long	00665			-



"KVC" Cut-off Blades

Mechtrix Description	Mechtrix Part Number	Blade Form Diameter		OEM Part Number
		(in)	(mm)	
KVC-1.5 Cut-off Blade	00755	-	-	-
KVC-1.0 Cut-off Blade	13937	-	-	-

A complete set of KV/KVC tooling consists of two (2) KV Strip Blades-Long, two (2) KV Strip Blades-Short and two (2) KVC Cut-off Blades.



Komax Style "V" Stripping Blades

Mechtrix Description	Mechtrix Part Number	Blade Form Diameter		OEM Part Number
		(in)	(mm)	
Komax V1A1 Universal Strip Blade	18560-01	-	-	003011
Komax V1B1 Universal Strip Blade	18561-01	-	-	003012
Komax V1A2 Universal Strip Blade	18561-02	-	-	003017
Komax V1B2 Universal Strip Blade	18560-02	-	-	003018



Komax Style "V" Cut-off Blades

Mechtrix Description	Mechtrix Part Number	Blade Form Diameter		OEM Part Number
		(in)	(mm)	
Komax T1 Cut-off Blade	18214-CT1	-	-	003010

Mechtrix "KV" Stripping Blades are covered by U.S. Pat. 4,630,406



WIRELEASE • 30 Rue du Bois Moussay • 93240 STAINS
Tel : 0033 (0)1 49 51 51 45 • Fax : 0033 (0)1 49 51 51 50 • www.wirelease.fr

Komax Tooling

Komax 40, 41, 42 and 43 Toolholder Spacers

Used In These Machines

Komax
30/31
40
41
42
43



Mechtrix manufactures the complete range of Komax OEM Spacers as well as our KAS Series Strip and Fill Spacers. These spacers are thickness toleranced to $\pm 0.01\text{mm}$ and are flat and parallel to $\pm 0.075\text{mm}$. Mechtrix spacers are made of hardened tool steel which eliminates the development of burrs and facial flaws which affect the dimensional integrity of a spacer. Please contact Mechtrix for information regarding sizes not listed below.

Komax Spacers

Mechtrix Description	Mechtrix Part Number	Spacer Thickness		OEM Part Number
		(in)	(mm)	
KAS-1.0mm Spacer w/slot	16537-01	0.0394	1.0	003016
KAS-1.5mm Spacer w/slot	16537-02	0.0591	1.5	003015
KAS-2.0mm Spacer w/slot	16537-03	0.0787	2.0	003014
KAS-3.0mm Spacer w/hole	05176-46	0.1181	3.0	003013
KAS-5.0mm Spacer w/hole	05176-85	0.1969	5.0	003880
KAS-10.0mm Spacer w/hole	05176-165	0.3937	10.0	003029

Standard Komax Spacer Sets for Use With "KD" Die-Type Blades

Standard Quantity and Combinations of Spacers Used In:	Komax 10 x 10 Toolholder with KD Stripping Blades	Komax 10 x 20 Toolholder with KD Stripping Blades	Komax 20 x 20 Toolholder with KD Stripping Blades
KAS-1.0mm Spacer	4	4	4
KAS-1.5mm Spacer	10	10	10
KAS-2.0mm Spacer	8	8	8
KAS-3.0mm Spacer	-	-	-
KAS-5.0mm Spacer	-	-	-
KAS-10.0mm Spacer	-	2	4

Standard Komax Spacer Sets for Use With "KV" V-Style Blades

Standard Quantity and Combinations of Spacers Used In:	Komax 10 x 10 Toolholder with KV Stripping Blades	Komax 10 x 20 Toolholder with KV Stripping Blades	Komax 20 x 20 Toolholder with KV Stripping Blades
KAS-1.0mm Spacer	10	10	10
KAS-1.5mm Spacer	8	8	8
KAS-2.0mm Spacer	4	4	4
KAS-3.0mm Spacer	4	4	4
KAS-5.0mm Spacer	-	-	-
KAS-10.0mm Spacer	-	2	4

Please note that the quantities listed above need to be doubled for Komax 43 Double Toolholders



WIRELEASE • 30 Rue du Bois Moussay • 93240 STAINS
Tel : 0033 (0)1 49 51 51 45 • Fax : 0033 (0)1 49 51 51 50 • www.wirelease.fr

Komax Tooling

Komax Gamma 255 and Gamma 252-S Stripping Blades

Used In These Machines

Komax
Gamma 255
Gamma 252-S

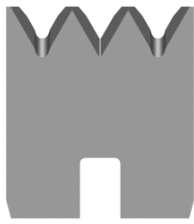
The Komax Gamma 255 and Gamma 252-S Machines use a single set of Stripping Blades to remove the insulation from the end of a wire. The Mechtrix blades for the Komax Gamma Machines are made to precision standards from a specially selected tool steel and micro-grain carbide to insure optimum performance and blade life. State-of-the-art manufacturing techniques are combined with Mechtrix patented technology to create perfect stripping form radii which produce the highest quality cutting tool possible.

In addition to the "Universal" Stripping Blades, Mechtrix also offers our patented M-Series and Full Radius stripping form geometries for processing difficult insulations in the Komax Gamma 255 and Gamma 252-S Machines. Please contact Mechtrix for assistance in selecting the appropriate style and size blade for your particular application.



Komax Gamma 255 and Gamma 252-S Universal Blades

Mechtrix Description	Mechtrix Part Number	Blade Form Diameter		OEM Part Number
		(in)	(mm)	
Komax Gamma 255-R0.07 Strip Blade w/TiN Coating	29912-CT1	0.0055	0.14	065331
Komax Gamma 255-R0.10 Strip Blade w/TiN Coating	29913-CT1	0.0079	0.20	065332
Komax Gamma 255-R0.25 Strip Blade w/TiN Coating	28959-CT1	0.0197	0.50	065333
Komax Gamma 255-R0.50 Strip Blade w/TiN Coating	28921-CT1	0.0394	1.00	065334
Komax Gamma 255-R0.75 Strip Blade w/TiN Coating	28998-CT1	0.0591	1.50	065335
Komax Gamma 255-R1.00 Strip Blade w/TiN Coating	29714-CT1	0.0787	2.00	065336
Komax Gamma 255-R1.50 Strip Blade w/TiN Coating	29715-CT1	0.1181	3.00	



Komax Gamma 255 and Gamma 252-S M-Series Blades

Mechtrix Description	Mechtrix Part Number	Blade Form Diameter		OEM Part Number
		(in)	(mm)	
M-Series Blades are available in 0.1mm increments in the following sizes: KG255M-0.3 thru KG255M-7.0	-	-	-	-



Komax Gamma 255 and Gamma 252-S Full Radius Blades

Mechtrix Description	Mechtrix Part Number	Blade Form Diameter		OEM Part Number
		(in)	(mm)	
Full Radius Blades are available in 0.1mm increments in the following sizes: KG255-0.4D thru KG255-7.0D	-	-	-	-

Mechtrix "KG255" Stripping Blades are protected by U.S. Patent 4,630,406 and U.S. Patent 4,577,405



WIRELEASE • 30 Rue du Bois Moussay • 93240 STAINS
Tel : 0033 (0)1 49 51 51 45 • Fax : 0033 (0)1 49 51 51 50 • www.wirelease.fr

Komax Tooling

Komax Alpha 411/421/422/432 and Gamma 311/333 Stripping Blades

Used In These Machines

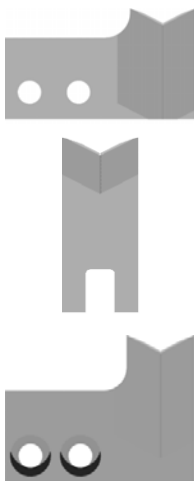
- Komax
- Alpha 411
- Alpha 421
- Alpha 422
- Alpha 432
- Gamma 311
- Gamma 333

Mechtrix "KA" Series Stripping Blades are used in Komax Alpha 411, 421, 422, 432 and Gamma 311 and 333 Wire Processing Machines. "KA" Stripping Blades are a "V" Style Stripping Blade and are designed to process a range of wire diameters from 0.1mm² to 6.0mm². The precise cutterhead motion control of the Alpha and Gamma Machines allows for superior cutting and gathering ability, and longer blade life. Mechtrix "KA" Stripping Blades are made to precision standards from a specially selected tool steel to insure optimum performance and blade life and are produced using state-of-the-art manufacturing techniques. "KA" Stripping Blades have the Mechtrix patented feature of a cutting form which includes a perfectly formed cutting radius. Please contact Mechtrix for assistance in selecting the appropriate size blade for your particular application.



Komax Alpha 411/421/422/432 and Gamma 311/333 Stripping Blades

Mechtrix Description	Mechtrix Part Number	Blade Form Diameter		OEM Part Number
		(in)	(mm)	
KA-0.1 Stripping Blade w/Titanium Coating	15939-CT1	0.00787	0.20	030299
KA-0.5 Stripping Blade w/Titanium Coating	14944-CT1	0.03937	1.00	033958
KA-0.75 Stripping Blade w/Titanium Coating	14945-CT1	0.05906	1.50	033959
KA-1.0 Stripping Blade w/Titanium Coating	15800-CT1	0.07874	2.00	033960
KA-1.5 Stripping Blade w/Titanium Coating	15893-CT1	0.11811	3.00	033961
KA-2.0 Stripping Blade w/Titanium Coating	15894-CT1	0.15748	4.00	033962
KA-0.5 (HD) Stripping Blade w/ Firex Coating	20773-CT5	0.03937	1.00	041395
KA-0.75 (HD) Stripping Blade w/ Firex Coating	20774-CT5	0.05906	1.50	041396
KA-1.0 (HD) Stripping Blade w/ Firex Coating	20775-CT5	0.07874	2.00	041397
KA-1.5 (HD) Stripping Blade w/ Firex Coating	20776-CT5	0.11811	3.00	041398
KA-2.0 (HD) Stripping Blade w/ Firex Coating	20777-CT5	0.15748	4.00	041399



Komax Alpha 411/421/422/432 and Gamma 311/333 Cut-off Blades

Mechtrix Description	Mechtrix Part Number	Blade Form Diameter		OEM Part Number
		(in)	(mm)	
KA Lower Cut-Off Blade w/Titanium Coating	14942-CT1	-	-	037862
KA Upper Cut-Off Blade w/Titanium Coating	14943-CT1	-	-	030297
KA (HD) Cut-Off Lower w/Titanium Coating	15957-CT1	-	-	034645
KA (HD) Cut-Off Upper w/Titanium Coating	15958-CT1	-	-	034644
KA 4mm ² Cut-Off Lower w/Titanium Coating	17855-CT1	-	-	041596
KA 4mm ² Cut-Off Upper w/Titanium Coating	17854-CT1	-	-	041595
KA 6mm ² Cut-Off Lower w/Firex Coating	17853-CT5	-	-	041557
KA 6mm ² Cut-Off Upper w/Firex Coating	17852-CT5	-	-	041556
KA (DT) Cut-Off Upper w/Titanium Coating	15542-CT1	-	-	037943
KA (DT) 4mm ² Cut-Off Upper w/Titanium Coating	23359-CT1	-	-	041597
KA (DT) 6mm ² Cut-Off Upper w/Firex Coating	21760-CT5	-	-	041558
KG Cut-Off Blade (VT1) Gamma 311	17884-CT1	-	-	040966

Mechtrix "KA" Stripping Blades are protected by U.S. Patent 4,630,406 and U.S. Patent 4,577,405



WIRELEASE • 30 Rue du Bois Moussay • 93240 STAINS
Tel : 0033 (0)1 49 51 51 45 • Fax : 0033 (0)1 49 51 51 50 • www.wirelease.fr

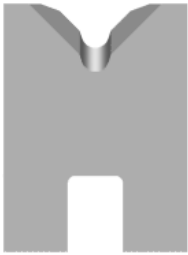
Komax Tooling

Komax Alpha 411/421/422/432 and Gamma 311/333 Special Blades

Used In These Machines

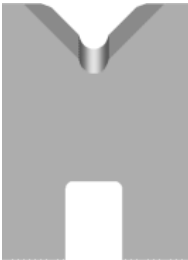
- Komax
- Alpha 411
- Alpha 421
- Alpha 422
- Alpha 432
- Gamma 311
- Gamma 333

In addition to the standard replacement stripping blades for the Komax Alpha and Gamma Machines, Mechtrix also offers our "KAM" Series and Full Radius Stripping Blades. "KAM" Series Stripping Blades incorporate a Mechtrix patented blade design which offers a compound entry angle into the cutting portion of the blade. This design feature, while continuing to offer the advantages of a "V" type design (excellent wire gathering and adjustability) facilitates a higher degree of circumferential cut around a wire's conductor. "KAM" Series and Full Radius Blades offer improved performance when processing wire which require a cutting configuration which closely matches the wire's conductor diameter. This feature is of greatest benefit when processing insulations which are either very soft, very hard and thin or just very thin. Please contact Mechtrix for assistance in selecting the appropriate style and size blade for your particular application.



Komax Alpha 411/421/422/432 and Gamma 311/333 M-Series Blades

Mechtrix Description	Mechtrix Part Number	Blade Form Diameter		OEM Part Number
		(in)	(mm)	
M-Series Blades are available in 0.1mm increments in the following sizes: KAM-0.3 thru KAM-10.0	-	-	-	-



Komax Alpha 411/421/422/432 and Gamma 311/333 Full Radius Blades

Mechtrix Description	Mechtrix Part Number	Blade Form Diameter		OEM Part Number
		(in)	(mm)	
Full Radius Blades are available in 0.1mm increments in the following sizes: KA-0.4D thru KA-10.0D	-	-	-	-

Mechtrix "KAM" Stripping Blades are protected by U.S. Patent 4,630,406 and U.S. Patent 4,577,405



WIRELEASE • 30 Rue du Bois Moussay • 93240 STAINS
Tel : 0033 (0)1 49 51 51 45 • Fax : 0033 (0)1 49 51 51 50 • www.wirelease.fr

Komax Tooling

Komax Alpha 355/356/358/433/455/477/488 & Zeta 633/651 Strip Blades

Used In These Machines

- Komax
- Alpha 355
- Alpha 356
- Alpha 358
- Alpha 433
- Alpha 455
- Alpha 477
- Alpha 488
- Zeta 633
- Zeta 651

Mechtrix "KA433" Series Stripping Blades are used in Komax Alpha 355, 356, 358, 433, 455, 477, 488 and Zeta 633 and 651 Wire Processing Machines. "KA433" Stripping Blades are a "V" Style Stripping Blade and are designed to process a range of wire diameters. Mechtrix "KA433" Stripping Blades are made to precision standards from a specially selected tool steel to insure optimum performance and blade life and are produced using state-of-the-art manufacturing techniques. "KA433" Stripping Blades have the Mechtrix patented feature of a cutting form which includes a perfectly formed cutting radius.

In addition to the "Universal" Stripping Blades, Mechtrix also offers our patented M-Series and Full Radius stripping form geometries for processing difficult insulations in the 355, 356, 358, 433, 455, 477, 488 and Zeta 633 and 651 Machines. Please contact Mechtrix for assistance in selecting the appropriate style and size blade for your particular application.



Komax Alpha 355/356/358/433/455/477/488/Zeta 633/651 Stripping Blades

Mechtrix Description	Mechtrix Part Number	Blade Form Diameter		OEM Part Number
		(in)	(mm)	
KA433-0.1 Stripping Blade w/Titanium Coating	21651-CT1	0.00787	0.20	048492
KA433-0.35 Stripping Blade w/Titanium Coating	31883-CT1	0.02756	0.70	800006
KA433-0.5 Stripping Blade w/Titanium Coating	21284-CT1	0.03937	1.00	045592
KA433-0.75 Stripping Blade w/Titanium Coating	21652-CT1	0.05906	1.50	045588
KA433-1.0 Stripping Blade w/Titanium Coating	21283-CT1	0.07874	2.00	045589
KA433-1.5 Stripping Blade w/Titanium Coating	21653-CT1	0.11811	3.00	045590
KA433-2.0 Stripping Blade w/Titanium Coating	21654-CT1	0.15748	4.00	045591
KA433-2.5 Stripping Blade w/Titanium Coating	27932-CT1	0.19690	5.00	062222



Komax Alpha 355/356/358/433/455/477/488/Zeta 633/651 M-Series Blades

Mechtrix Description	Mechtrix Part Number	Blade Form Diameter		OEM Part Number
		(in)	(mm)	
M-Series Blades are available in 0.1mm increments in the following sizes: KA433M-0.3 thru KA433M-4.0	-	-	-	-



Komax Alpha 355/356/358/433/455/477/488/Zeta 633/651 Full Radius Blades

Mechtrix Description	Mechtrix Part Number	Blade Form Diameter		OEM Part Number
		(in)	(mm)	
Full Radius Blades are available in 0.1mm increments in the following sizes: KA433-0.4D thru KA433-4.0D	-	-	-	-

Mechtrix "KA433" Stripping Blades are protected by U.S. Patent 4,630,406 and U.S. Patent 4,577,405



WIRELEASE • 30 Rue du Bois Moussay • 93240 STAINS
Tel : 0033 (0)1 49 51 51 45 • Fax : 0033 (0)1 49 51 51 50 • www.wirelease.fr

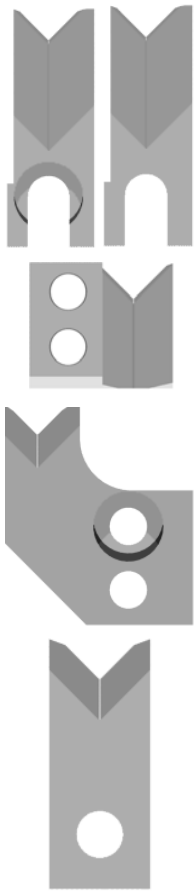
Komax Tooling

Komax Alpha 355/356/358/433/455/477/488 & Zeta 633/651 Cut-off Blades

Used In These Machines

Komax
Alpha 355
Alpha 356
Alpha 358
Alpha 433
Alpha 455
Alpha 477
Alpha 488
Zeta 633
Zeta 651

Mechtrix "KA433" Series Cut-off Blades are used in Komax Alpha 355, 356, 358, 433, 455, 477, 488 and Zeta 633 and 651 Wire Processing Machines. Mechtrix "KA433" Cut-off Blades are made to precision standards from a specially selected tool steel to insure optimum performance and blade life and are produced using state-of-the-art manufacturing techniques. Please contact Mechtrix for assistance in selecting the appropriate style and size blade for your particular application.



Komax Alpha 355/356/358/433/455/477/488/Zeta 633/651 Cut-off Blades

Mechtrix Description	Mechtrix Part Number	Blade Form Diameter		OEM Part Number
		(in)	(mm)	
KA433/477/488 Upper Cut-off Blade R-0.5	21287-CT1	-	-	045593
KA433/477/488 Upper Cut-off Blade R-0.75		-	-	045594
KA433/477/488 Upper Cut-off Blade R-1.0		-	-	045595
KA433/477/488 Upper Cut-off Blade R-1.5		-	-	045596
KA433/477/488 Upper Cut-off Blade R-2.0	26870-CT1	-	-	045597
KA433 (DT) Lower Cut-off Blade R-0.5	21286-CT1	-	-	045598
KA433 (DT) Lower Cut-off Blade R-0.75		-	-	045599
KA433 (DT) Lower Cut-off Blade R-1.0		-	-	045600
KA433/477/488 Lower Cut-off Blade R-0.5	21285-CT1	-	-	045603
KA433/477/488 Lower Cut-off Blade R-0.75		-	-	045604
KA433/477/488 Lower Cut-off Blade R-1.0		-	-	045605
KA433/477/488 Lower Cut-off Blade R-1.5		-	-	045606
KA433/477/488 Lower Cut-off Blade R-2.0	26876-CT1	-	-	045607
KA433 (DT) Upper Cut-off Blade R-0.5	21655-CT1	-	-	047954
KA477/488 Lower Cut-off Blade	24572-CT1	-	-	048875
KA477/488 (DT) and Lower Cut-off Blade	24424-CT1	-	-	048876
KA355 (DT) Cut-off Blade R-0.5	30288-CT1	-	-	073449

Mechtrix "KA433" Stripping Blades are protected by U.S. Patent 4,630,406 and U.S. Patent 4,577,405



WIRELEASE • 30 Rue du Bois Moussay • 93240 STAINS
Tel : 0033 (0)1 49 51 51 45 • Fax : 0033 (0)1 49 51 51 50 • www.wirelease.fr

Komax Tooling

Special Tooling for Komax Machines

Used In These Machines

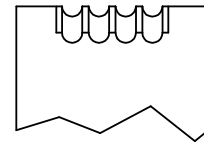
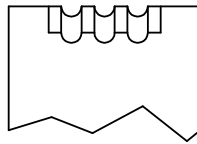
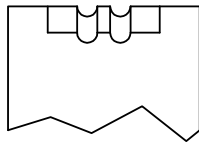
Komax
30/31
33
34
35
36
4X
Alpha
Cosmic
Delta
Gamma
Kappa

In addition to single conductor stripping blades, Mechtrix also offers multi-conductor stripping blades, jacket stripping blades and slitting tools for most Komax Machines. Please contact Mechtrix for assistance in selecting the appropriate style and size blade for your particular application.

Multi-Conductor Stripping Blades

Available in variety of combinations and configurations to exactly match your particular wire specifications.

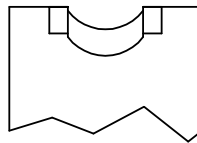
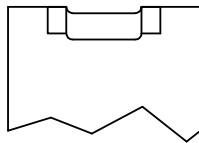
- Number of stripping forms
- Diameter size of stripping forms
- Pitch or spacing between stripping forms



Jacket Stripping Blades

Available in variety of combinations and configurations to exactly match your particular wire specifications.

- Flat cables
- Oval cables
- Special cable profiles (not shown)



Slitting Tools

Available in variety of combinations and configurations to exactly match your particular wire specifications. A set of slitting tools consists of two pieces, (1) slitting tool holder, (1) slitting blade pusher and (2) guide blades.

- Slitting Tool Holder
- Slitting Blade Pusher
- Guide Blade

